

MONA OFFSHORE WIND PROJECT

Tree Survey Clarification Note: Appendix 17.8 Updated Tree and Hedgerow Protection Plan Part 3

Deadline: 3

Application Reference: EN010137

Document Reference: S_D3_17.8

Document Number: MOCNS-J3303-RPS-10348

30 September 2024

F01



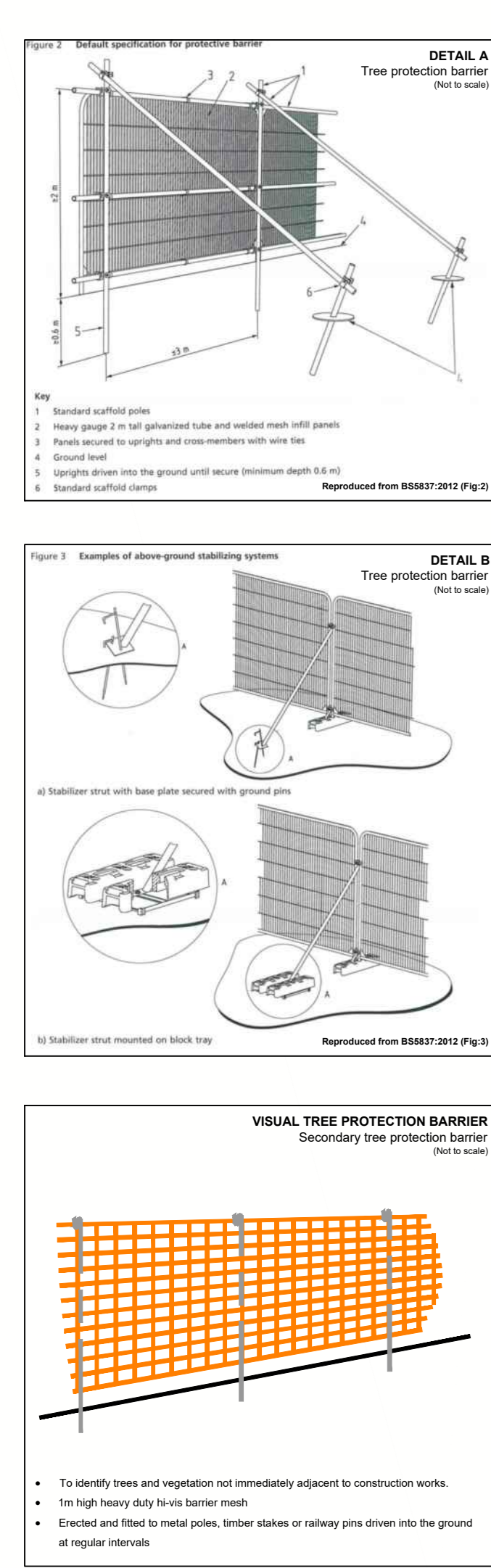
Image of an offshore wind farm

Document status

Version	Purpose of document	Authored by	Reviewed by	Approved by	Review date
F01	Submission at Deadline 3	RPS	Mona Offshore Wind Ltd.	Mona Offshore Wind Ltd.	30 September 2024

Prepared by:
RPS

Prepared for:
Mona Offshore Wind Ltd.



LEGEND

Crucial Development Area (M0_P01_SF_0102_000_R011)

Tree with numbered reference. Canopy spread and coloured BS5837:2012 tree quality category as shown below.
 # = Tree details estimate (inaccessible tree)
 * = Tree in off site location

Vegetation group with numbered reference. Canopy extents and coloured BS5837:2012 tree quality category as shown below.

Hedge with numbered reference. Canopy extents and coloured BS5837:2012 tree quality category as shown below.

Woodland with numbered reference. Canopy extents and coloured BS5837:2012 tree quality category as shown below.

BS 5837:2012 Tree Quality Categories - Table 1

- Category A - High quality
- Category B - Moderate quality
- Category C - Low quality
- Category U - Unsuitable for retention

T1 Tree or vegetation to be removed with numbered reference. Canopy spread and BS5837:2012 tree quality category.

Root protection area (RPA) Calculated in accordance with Section 4.6 - BS5837:2012

Precautionary Root protection area (RPA) previously added to un-surveyed trees. Shown for reference.

Tree protected by Conwy Council or Denbighshire Tree Preservation Order (TPO). Bracketed number reference relates to the TPO Schedule.

Veteran tree buffer (15 x stem Ø) (as per standing advice produced by Natural Resource Wales)

Designated Ancient Woodland and buffer (15m offset, as per Natural Resource Wales woodland inventory, via open data publication)

Arboricultural BRAG Assessment
 Based on quantitative and professional assessment. The ranking is defined as:

- Black: Significant arboreal asset within development.
- Red: High potential to constrain development.
- Amber: Moderate potential to constrain development, and
- Green: Low potential to constrain development

Construction Compound or Access Area
 Arboricultural constraint based on providing a construction exclusion zone (CEZ):

- Black: At all times, compound should avoid entering this area.
- Red: In nearly all circumstances, compound should avoid entering this area.
- Amber: In most circumstances, compound should avoid entering this area.
- Green: Little or no arboricultural constraint which would affect compound location.

Cable Crossing Technique with numbered reference

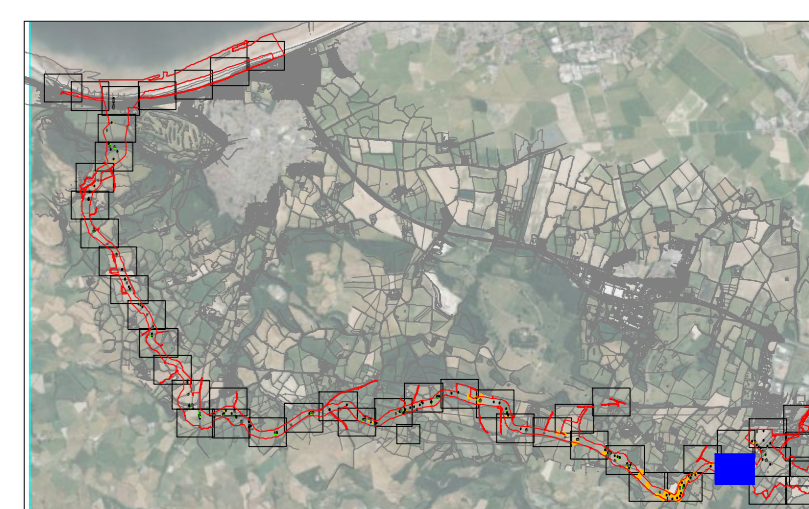
- Trenchless
- Trenching / Trenchless
- Trenched

Indicative temporary protective fencing in accordance with Section 6.2 - BS5837:2012 See example, also shown within supporting report.

Indicative temporary visual warning barrier. See example detail, also shown within supporting report.

NOTES:

- Refer to RPS Tree Survey & Arboricultural Impact Assessment Report for further details.
- Survey based on a visual inspection from the ground and is not intended as a full arboricultural inspection.
- Plan produced in accordance with recommendations set out in BS 5837:2012 - Trees in relation to design, demolition and construction.
- Due to the legal protection afforded to breeding birds vegetation removal should not take place during the nesting period; generally, although not restricted to, March - August inclusive.
- Survey based upon aerial photography, therefore tree locations should be deemed as approximate, and not digitally accurate.
- Precautionary vehicular emergency access routes to be maintained at all times.
- All protective fencing to be completed and approved by IPA / CA prior to commencement of any site works.
- All works to conform with requirements of BS 5837:2012 - Tree Works
- BS 5837:2012 - Trees in relation to design, demolition and construction



Rev	Description	By	CB	Date



Drawing Number:
7139

VER	DATE	DETAILS	BY	CHECK
01	Jan/24	Comment	RC	DC
04	Sept/24	Information	RC	DC

Project Name:
MONA OFFSHORE WIND PROJECT

Drawing Title:
TREE AND HEDGEROW PROTECTION PLAN

Scale
Scale@A0: 1:500

Geodetic Information:
Datum: ETRS 1989
Projection: British National Grid

Data Sources: Client

Service Layer Credits: Esri, HERE, Garmin, Intermap, increment P Corp., GEBCO, USGS, FAO, NPS, NRCAN, GeoBase, IGN, Kadaster NL, Ordnance Survey, Esri Japan, METI, Esri China (Hong Kong), (c) OpenStreetMap contributors, and the GIS User Community

\\s01h-fs-01\projects\3300 Series\3399 - Morgan and Mona Offshore Wind\Arboriculture\Tech\ACAD\Current\3399_800E_TFP_Cable Route.dwg
 Visuall-fs-01\projects\3300 Series\3399 - Morgan and Mona Offshore Wind\Arboriculture\Tech\ACAD\Current\3399_800E_TFP_Cable Route.dwg



LEGEND

Creation Development Area
(MSI_PRL_SP_0162_000_Ren1)

- T1 Tree with numbered reference. Canopy spread and coloured BS5837:2012 tree quality category as shown below.
 - # = Tree details estimate (unaccessible tree)
 - * = Tree in off site location
- G1 Vegetation group with numbered reference. Canopy extents and coloured BS5837:2012 tree quality category as shown below.
- H1 Hedge with numbered reference. Canopy extents and coloured BS5837:2012 tree quality category as shown below.
- W1 Woodland with numbered reference. Canopy extents and coloured BS5837:2012 tree quality category as shown below.

BS 5837:2012 Tree Quality Categories - Table 1

- Category A - High quality
- Category B - Moderate quality
- Category C - Low quality
- Category U - Unsuitable for retention

- T1 Tree or vegetation to be removed with numbered reference. Canopy spread and BS5837:2012 tree quality category.
- Root protection area (RPA) Calculated in accordance with Section 4.6 - BS5837:2012
- Precautionary Root protection area (RPA) previously added to un-surveyed trees. Shown for reference.
- Tree protected by Conwy Council or Denbighshire Tree Preservation Order (TPO). Bracketed number reference relates to the TPO Schedule.
- Veteran tree buffer (15 x stem Ø) (as per standing advice produced by Natural Resource Wales)
- Designated Ancient Woodland and buffer (15m offset; as per Natural Resource Wales woodland inventory, via open data publication)

Arboricultural BRAG Assessment
Based on quantitative and professional assessment. The ranking is defined as:

- Black: Significant arboreal asset within development.
- Red: High potential to constrain development.
- Amber: Moderate potential to constrain development, and
- Green: Low potential to constrain development

Construction Compound or Access Area
Arboricultural constraint based on providing a construction exclusion zone (CEZ):

- Black: At all times, compound should avoid entering this area.
- Red: In nearly all circumstances, compound should avoid entering this area.
- Amber: In most circumstances, compound should avoid entering this area.
- Green: Little or no arboricultural constraint which would affect compound location.

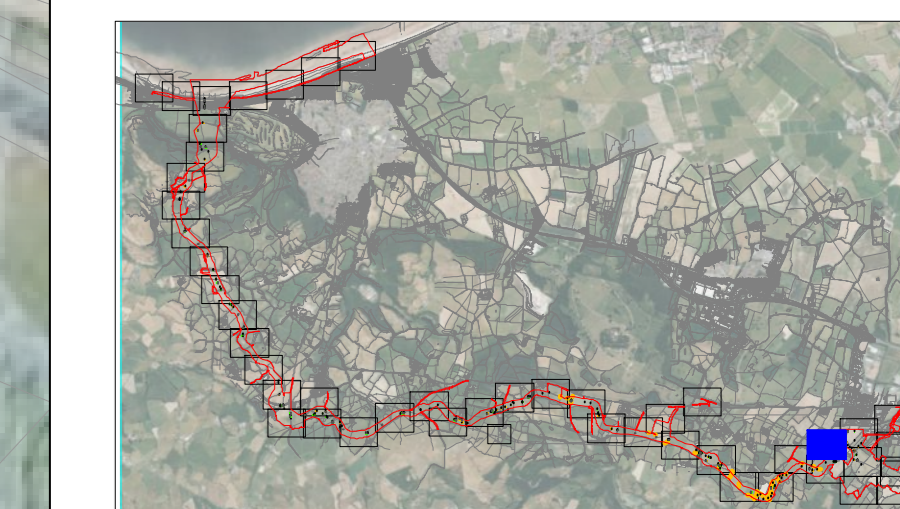
Cable Crossing Technique with numbered reference

- Trenchless
- Trenching / Trenchless
- Trenched

- Indicative temporary protective fencing in accordance with Section 6.2 - BS5837:2012 See example, also shown within supporting report.
- Indicative temporary visual warning barrier. See example detail, also shown within supporting report.

NOTES:

- Refer to RPS Tree Survey & Arboricultural Impact Assessment Report for further details.
- Survey based on a visual inspection from the ground and is not intended as a full arboricultural inspection.
- Plan produced in accordance with recommendations set out in BS 5837:2012 - Trees in relation to design, demolition and construction.
- Due to the legal protection afforded to breeding birds vegetation removal should not take place during the bird nesting period; generally, although not restricted to, March - August inclusive.
- Survey based upon aerial photography, therefore tree locations should be deemed as approximate, and not digitally accurate.
- Pedestrian/vehicular emergency access routes to be maintained at all times.
- All protective fencing to be completed and approved by LPA / CA prior to commencement of any site works.
- All works to conform with requirements of:
 - BS 5838:2012 - Tree Works
 - BS 5837:2012 - Trees in relation to design, demolition and construction



Rev	Description	By	CB	Date



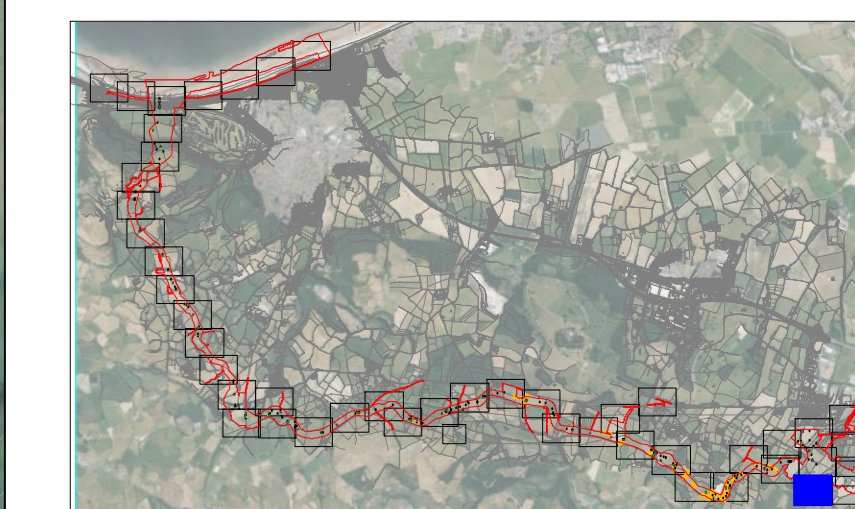
Drawing Number:
7140



LEGEND

- Onshore Development Area (M02_P01_SF_0102_000_Rev11)
- Tree with numbered reference. Canopy spread and coloured BS5837:2012 tree quality category as shown below. # = Tree details estimate (inaccessible tree) * = Tree in off site location
- Vegetation group with numbered reference. Canopy extents and coloured BS5837:2012 tree quality category as shown below.
- Hedge with numbered reference. Canopy extents and coloured BS5837:2012 tree quality category as shown below.
- Woodland with numbered reference. Canopy extents and coloured BS5837:2012 tree quality category as shown below.
- BS 5837:2012 Tree Quality Categories - Table 1**
- Category A - High quality
- Category B - Moderate quality
- Category C - Low quality
- Category U - Unsuitable for retention
- Tree or vegetation to be removed with numbered reference. Canopy spread and BS5837:2012 tree quality category.
- Root protection area (RPA) Calculated in accordance with Section 4.6 - BS5837:2012
- Precautionary Root protection area (RPA) previously added to un-surveyed trees. Shown for reference.
- Tree protected by Conwy Council or Denbighshire Tree Preservation Order (TPO). Bracketed number reference relates to the TPO Schedule.
- Veteran tree buffer (15 x stem Ø) (as per standing advice produced by Natural Resource Wales)
- Designated Ancient Woodland and buffer (15m offset, as per Natural Resource Wales woodland inventory, via open data publication)
- Arboricultural BRAG Assessment**
Based on quantitative and professional assessment. The ranking is defined as:
- Black: Significant arboreal asset within development.
- Red: High potential to constrain development;
- Amber: Moderate potential to constrain development; and
- Green: Low potential to constrain development
- Arboricultural constraint based on providing a construction exclusion zone (CEZ):**
- Black: At all times, compound should avoid entering this area.
- Red: In nearly all circumstances, compound should avoid entering this area;
- Amber: In most circumstances, compound should avoid entering this area;
- Green: Little or no arboricultural constraint which would affect compound location.
- Cable Crossing Technique with numbered reference**
- Trenchless
- Trenching / Trenchless
- Trenched
- Indicative temporary protective fencing in accordance with Section 6.2 - BS5837:2012 See example, also shown within supporting report.
- Indicative temporary visual warning barrier. See example detail, also shown within supporting report.

- NOTES:**
- Refer to RPS Tree Survey & Arboricultural Impact Assessment Report for further details.
 - Survey based on a visual inspection from the ground and is not intended as a full arboricultural inspection.
 - Plan produced in accordance with recommendations set out in BS 5837:2012 - Trees in relation to design, demolition and construction.
 - Due to the legal protection afforded to breeding birds vegetation removal should not take place during the bird nesting period; generally, although not restricted to, March - August inclusive.
 - Survey based upon aerial photography, therefore tree locations should be deemed as approximate, and not digitally accurate.
 - Pedestrian vehicular emergency access routes to be maintained at all times.
 - All protective fencing to be completed and approved by IPA / CA prior to commencement of any site works.
 - All works to conform with requirements of: BS 5838:2015 - Tree Works BS 5837:2012 - Trees in relation to design, demolition and construction



Rev	Description	By	CB	Date



Drawing Number: 7141

Project Name:
MONA OFFSHORE WIND PROJECT

Drawing Title:
TREE AND HEDGEROW PROTECTION PLAN

Scale
Scale@A0: 1:500

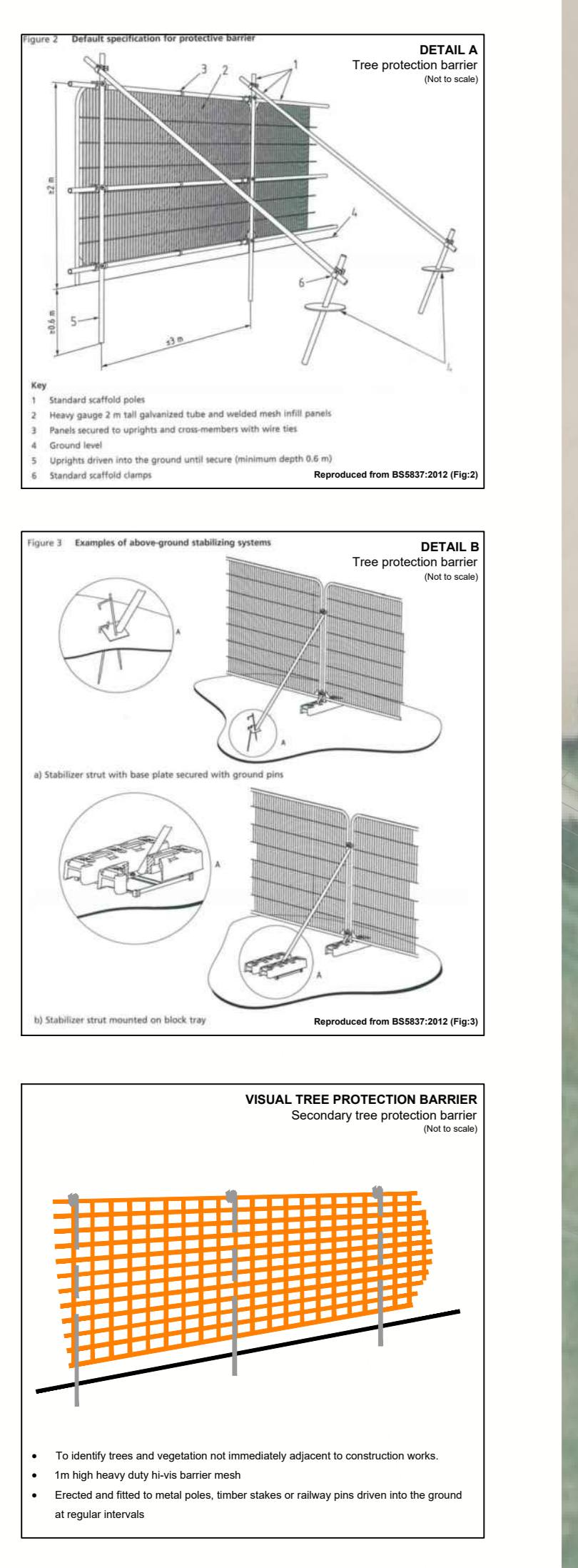
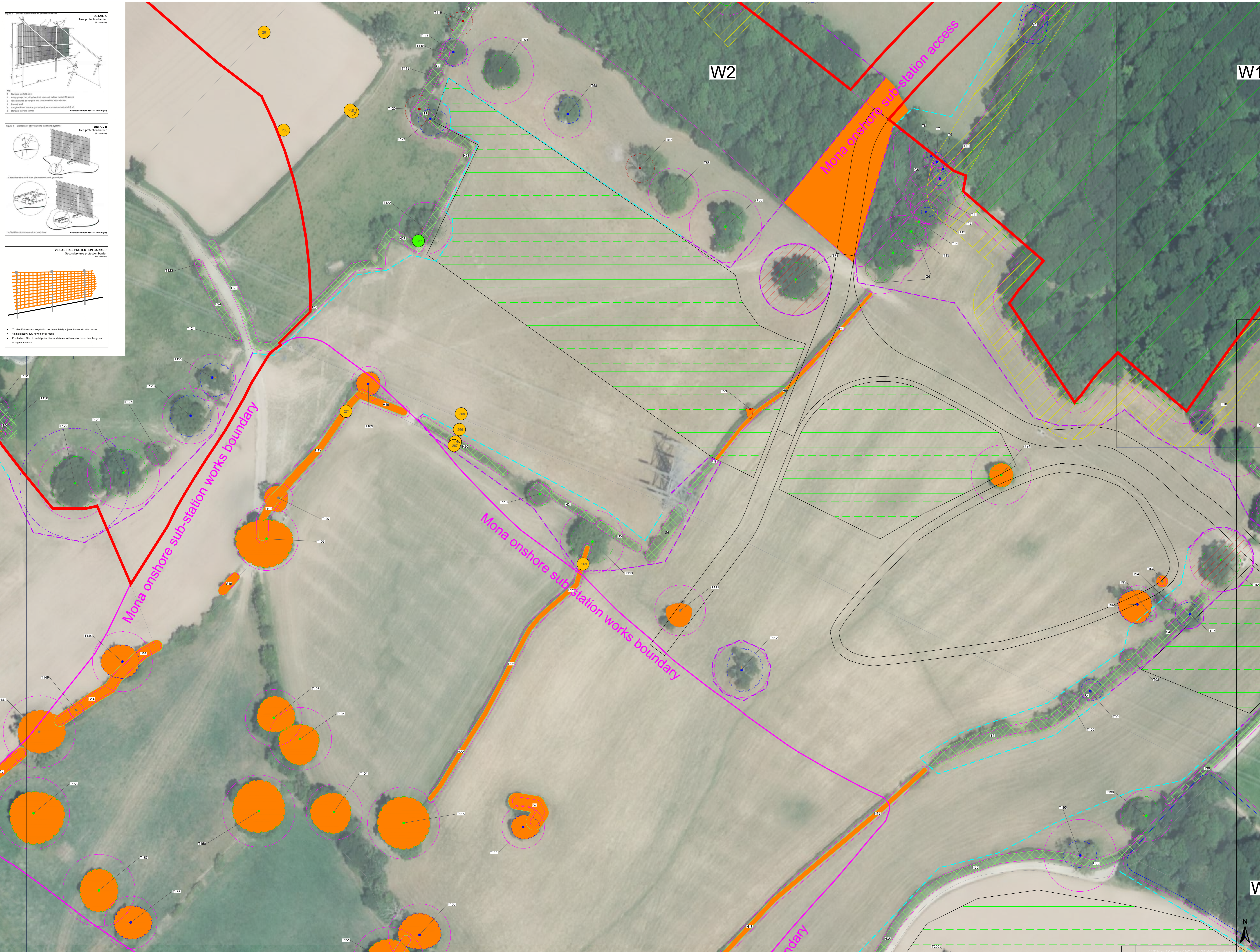
Geodetic Information:
Datum: ETRS 1989
Projection: British National Grid

Data Sources: Client

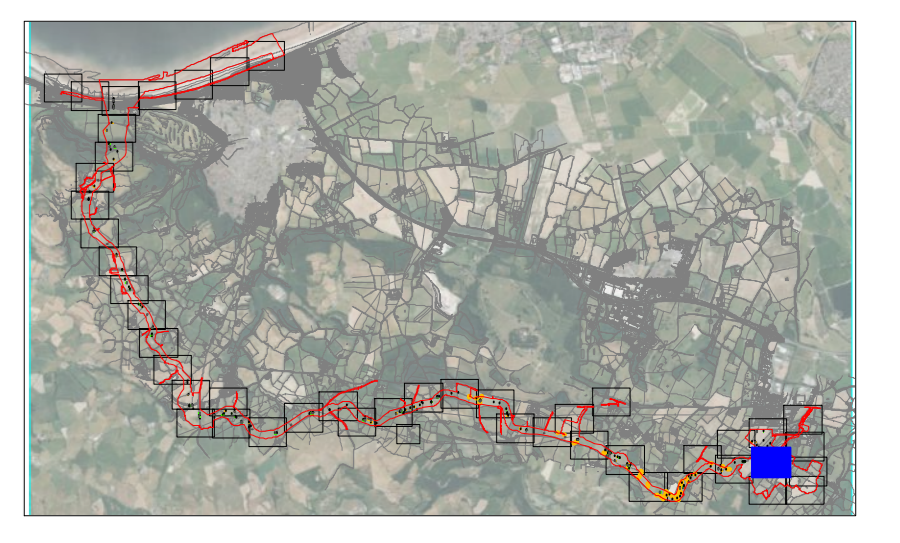
Service Layer Credits: Esri, HERE, Garmin, Intermap, increment P Corp., GEBCO, USGS, FAO, NPS, NRCAN, GeoBase, IGN, Kadaster NL, Ordnance Survey, Esri Japan, METI, Esri China (Hong Kong), (c) OpenStreetMap contributors, and the GIS User Community

VER	DATE	DETAILS	BY	CHECK
01	Jan/24	Comment	RC	DC
04	Sept/24	Information	RC	DC

\\s01h-fs-01\projects\3909 Series\US_3909 - Morgan and Mona Offshore Wind\Arboriculture\Tech\ACAD\Current\US_3909_010E_TFP_Cable Route.dwg
\\s01h-fs-01\projects\3909 Series\US_3909 - Morgan and Mona Offshore Wind\Arboriculture\Tech\ACAD\Current\US_3909_010E_TFP_Cable Route.dwg



- LEGEND**
- Orange Development Area (M0, P0, SP, S162, D00, R01)
 - Tree with numbered reference. Canopy spread and coloured BS5837:2012 tree quality category as shown below.
 - = Tree details estimate (inaccessible tree)
 - = Tree in off site location
 - Vegetation group with numbered reference. Canopy extents and coloured BS5837:2012 tree quality category as shown below.
 - Hedge with numbered reference. Canopy extents and coloured BS5837:2012 tree quality category as shown below.
 - Woodland with numbered reference. Canopy extents and coloured BS5837:2012 tree quality category as shown below.
- BS 5837:2012 Tree Quality Categories - Table 1**
- Category A - High quality
 - Category B - Moderate quality
 - Category C - Low quality
 - Category U - Unsuitable for retention
- T1 Tree or vegetation to be removed with numbered reference. Canopy spread and BS5837:2012 tree quality category.
 - Root protection area (RPA) Calculated in accordance with Section 4.6 - BS5837:2012
 - Precautionary Root protection area (RPA) previously added to un-surveyed trees. Shown for reference.
 - Tree protected by Conwy Council or Denbighshire Tree Preservation Order (TPO). Bracketed number reference relates to the TPO Schedule.
 - Veteran tree buffer (15 x stem Ø) (as per standing advice produced by Natural Resource Wales)
 - Designated Ancient Woodland and buffer (15m offset; as per Natural Resource Wales woodland inventory, via open data publication)
- Arboricultural BRAG Assessment**
Based on quantitative and professional assessment. The ranking is defined as:
- Black: Significant arboreal asset within development.
 - Red: High potential to constrain development;
 - Amber: Moderate potential to constrain development; and
 - Green: Low potential to constrain development
- Construction Compound or Access Area**
Arboricultural constraint based on providing a construction exclusion zone (CEZ):
- Black: At all times, compound should avoid entering this area;
 - Red: In nearly all circumstances, compound should avoid entering this area;
 - Amber: In most circumstances, compound should avoid entering this area;
 - Green: Little or no arboricultural constraint which would affect compound location.
- Cable Crossing Technique with numbered reference**
- Trenchless
 - Trenching / Trenchless
 - Trenched
- Indicative temporary protective fencing in accordance with Section 6.2 - BS5837:2012 See example, also shown within supporting report.
 - Indicative temporary visual warning barrier. See example detail, also shown within supporting report.
- NOTES:**
- Refer to RPS Tree Survey & Arboricultural Impact Assessment Report for further details.
 - Survey based on a visual inspection from the ground and is not intended as a full arboricultural inspection.
 - Plan produced in accordance with recommendations set out in BS 5837:2012 - Trees in relation to design, demolition and construction.
 - Due to the legal protection afforded to breeding birds vegetation removal should not take place during the nesting period; generally, although not restricted to, March - August inclusive.
 - Survey based upon aerial photography, therefore tree locations should be deemed as approximate, and not digitally accurate.
 - Provisionary vehicular emergency access routes to be maintained at all times.
 - All protective fencing to be completed and approved by LPA / CA prior to commencement of site works.
 - All works to conform with requirements of BS 5837:2012 - Tree Works
 - BS 5837:2012 - Trees in relation to design, demolition and construction



Rev	Description	By	CB	Date



Drawing Number: 7142

Project Name:
MONA OFFSHORE WIND PROJECT

Drawing Title:
TREE AND HEDGEROW PROTECTION PLAN

Scale
Scale@A0: 1:500

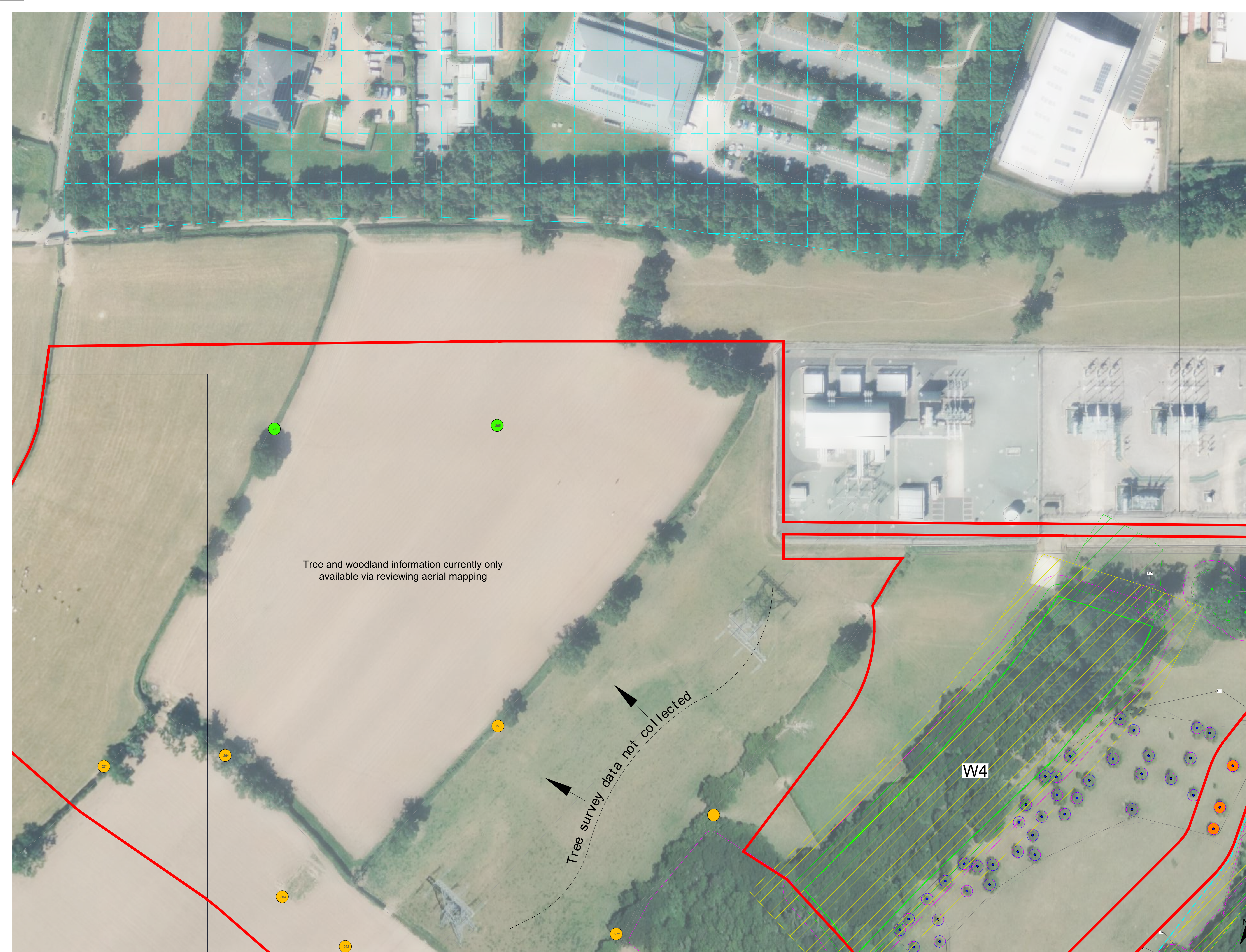
Geodetic Information:
Datum: ETRS 1989
Projection: British National Grid

Data Sources: Client

Service Layer Credits: Esri, HERE, Garmin, Intermap, increment P Corp., GEBCO, USGS, FAO, NPS, NRCAN, GeoBase, IGN, Kadaster NL, Ordnance Survey, Esri Japan, METI, Esri China (Hong Kong), (c) OpenStreetMap contributors, and the GIS User Community

VER	DATE	DETAILS	BY	CHECK
01	Jan/24	Comment	RC	DC
04	Sept/24	Information	RC	DC

\\sru-hs-01\projects\3993\Series\US3999 - Morgan and Mona Offshore Wind\Arboricultural\Tech\ACAD\Current\US3999_800E_TPP_Cable Route.dwg
\\sru-hs-01\projects\3993\Series\US3999 - Morgan and Mona Offshore Wind\Arboricultural\Tech\ACAD\Current\US3999_800E_TPP_Cable Route.dwg



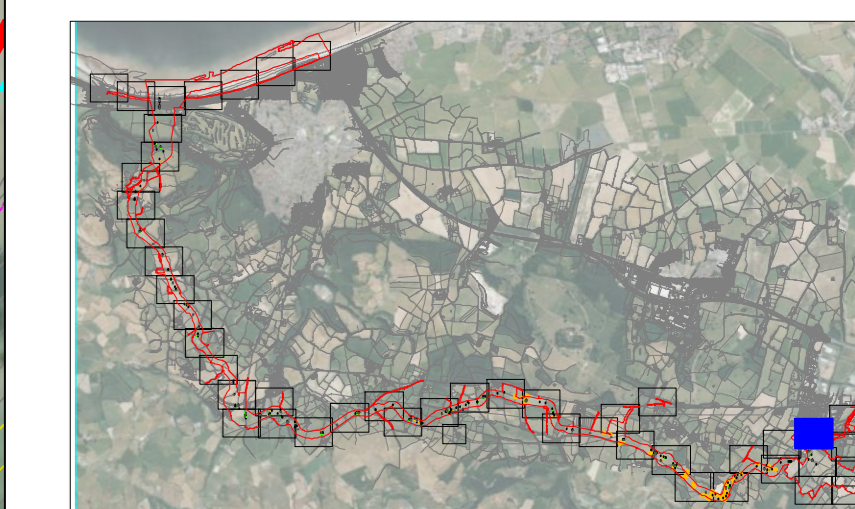
Tree and woodland information currently only available via reviewing aerial mapping

Tree survey data not collected

LEGEND

- Creative Development Area (MS_PRL_SF_0162_000_Ren1)
- Tree with numbered reference. Canopy spread and coloured BSS837:2012 tree quality category as shown below. # = Tree details estimate (inaccessible tree) = Tree in off site location
- Vegetation group with numbered reference. Canopy extents and coloured BSS837:2012 tree quality category as shown below.
- Hedge with numbered reference. Canopy extents and coloured BSS837:2012 tree quality category as shown below.
- Woodland with numbered reference. Canopy extents and coloured BSS837:2012 tree quality category as shown below.
- BSS 837:2012 Tree Quality Categories - Table 1**
- Category A - High quality
- Category B - Moderate quality
- Category C - Low quality
- Category U - Unsuitable for retention
- Tree or vegetation to be removed with numbered reference. Canopy spread and BSS837:2012 tree quality category.
- Root protection area (RPA) Calculated in accordance with Section 4.6 - BSS837:2012
- Precautionary Root protection area (RPA) previously added to un-surveyed trees. Shown for reference.
- Tree protected by Conwy Council or Denbighshire Tree Preservation Order (TPO). Bracketed number reference relates to the TPO Schedule.
- Veteran tree buffer (15 x stem Ø) (as per standing advice produced by Natural Resource Wales)
- Designated Ancient Woodland and buffer (15m offset; as per Natural Resource Wales woodland inventory, via open data publication)
- Arboricultural BRAG Assessment**
Based on quantitative and professional assessment. The ranking is defined as:
- Black: Significant arboreal asset within development;
- Red: High potential to constrain development;
- Amber: Moderate potential to constrain development; and
- Green: Low potential to constrain development
- Construction Compound or Access Area**
Arboricultural constraint based on providing a construction exclusion zone (CEZ):
- Black: At all times, compound should avoid entering this area;
- Red: In nearly all circumstances, compound should avoid entering this area;
- Amber: In most circumstances, compound should avoid entering this area;
- Green: Little or no arboricultural constraint which would affect compound location.
- Cable Crossing Technique with numbered reference**
- Trenchless
- Trenching / Trenchless
- Trenched
- Indicative temporary protective fencing in accordance with Section 6.2 - BSS837:2012 See example, also shown within supporting report.
- Indicative temporary visual warning barrier. See example detail, also shown within supporting report.

- NOTES:**
- Refer to RPS Tree Survey & Arboricultural Impact Assessment Report for further details.
 - Survey based on a visual inspection from the ground and is not intended as a full arboricultural inspection.
 - Plans produced in accordance with recommendations set out in BSS 837:2012 - Trees in relation to design, demolition and construction.
 - Due to the legal protection afforded to breeding birds vegetation removal should not take place during the nesting period; generally, although not restricted to, March - August inclusive.
 - Survey based upon aerial photography; therefore tree locations should be deemed as approximate, and not digitally accurate.
 - Pedestrian vehicular emergency access routes to be maintained at all times.
 - All protective fencing to be completed and approved by LPA / CA prior to commencement of site works.
 - All works to conform with requirements of: BSS 568:2012 - Tree Works BSS 5637:2012 - Trees in relation to design, demolition and construction



Rev	Description	By	CB	Date



Drawing Number: 7143

Project Name:
MONA OFFSHORE WIND PROJECT

Drawing Title:
TREE AND HEDGEROW PROTECTION PLAN

Scale
Scale@A0: 1:500

Geodetic Information:
Datum: ETRS 1989
Projection: British National Grid

Data Sources: Client

Service Layer Credits: Esri, HERE, Garmin, Intermap, increment P Corp., GEBCO, USGS, FAO, NPS, NRCAN, GeoBase, IGN, Kadaster NL, Ordnance Survey, Esri Japan, METI, Esri China (Hong Kong), (c) OpenStreetMap contributors, and the GIS User Community

VER	DATE	DETAILS	BY	CHECK
01	Jan/24	Comment	RC	DC
04	Sept/24	Information	RC	DC



LEGEND

Orange Development Area (MSL_PRL_SP_0162_000_Ren1)

T1 Tree with numbered reference. Canopy spread and coloured BS5837:2012 tree quality category as shown below.
 # = Tree details estimate (unaccessible tree)
 * = Tree in off site location

G1 Vegetation group with numbered reference. Canopy extents and coloured BS5837:2012 tree quality category as shown below.

H1 Hedge with numbered reference. Canopy extents and coloured BS5837:2012 tree quality category as shown below.

W1 Woodland with numbered reference. Canopy extents and coloured BS5837:2012 tree quality category as shown below.

BS 5837:2012 Tree Quality Categories - Table 1

- Category A - High quality
- Category B - Moderate quality
- Category C - Low quality
- Category U - Unsuitable for retention

T1 Tree or vegetation to be removed with numbered reference. Canopy spread and BS5837:2012 tree quality category.

Root protection area (RPA) Calculated in accordance with Section 4.6 - BS5837:2012

Precautionary Root protection area (RPA) previously added to un-surveyed trees. Shown for reference.

T1 Tree protected by Conwy Council or Denbighshire Tree Preservation Order (TPO). Bracketed number reference relates to the TPO Schedule.

Veteran tree buffer (15 x stem Ø) (as per standing advice produced by Natural Resource Wales)

Designated Ancient Woodland and buffer (15m offset, as per Natural Resource Wales woodland inventory, via open data publication)

Arboricultural BRAG Assessment
 Based on quantitative and professional assessment. The ranking is defined as:

- Black: Significant arboreal asset within development.
- Red: High potential to constrain development.
- Amber: Moderate potential to constrain development, and
- Green: Low potential to constrain development

Construction Compound or Access Area
 Arboricultural constraint based on providing a construction exclusion zone (CEZ):

- Black: At all times, compound should avoid entering this area.
- Red: In nearly all circumstances, compound should avoid entering this area.
- Amber: In most circumstances, compound should avoid entering this area.
- Green: Little or no arboricultural constraint which would affect compound location.

Cable Crossing Technique with numbered reference

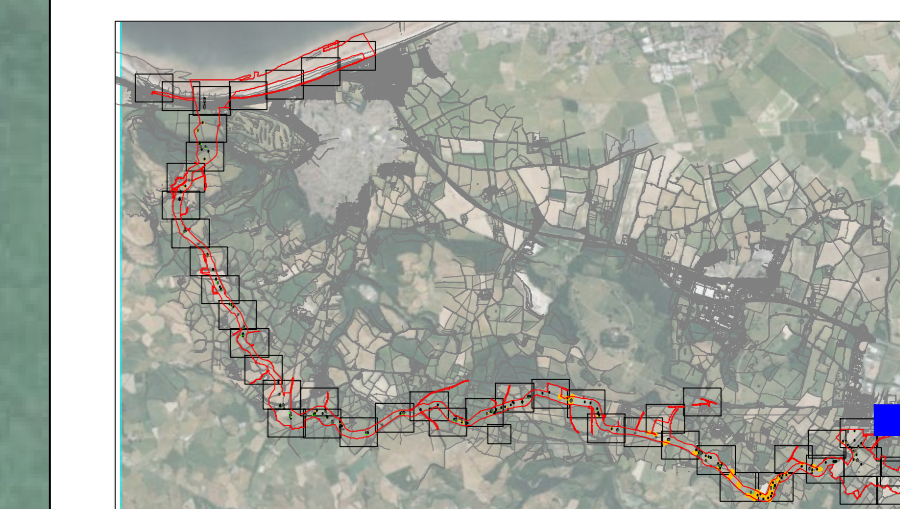
- Trenchless
- Trenching / Trenchless
- Trenched

Indicative temporary protective fencing in accordance with Section 6.2 - BS5837:2012 See example, also shown within supporting report.

Indicative temporary visual warning barrier. See example detail, also shown within supporting report.

NOTES:

- Refer to RPS Tree Survey & Arboricultural Impact Assessment Report for further details.
- Survey based on a visual inspection from the ground and is not intended as a full arboricultural inspection.
- Plans produced in accordance with recommendations set out in BS 5837:2012 - Trees in relation to design, demolition and construction.
- Due to the legal protection afforded to breeding birds vegetation removal should not take place during the bird nesting period; generally, although not restricted to, March - August inclusive.
- Survey based upon aerial photography, therefore tree locations should be deemed as approximate, and not digitally accurate.
- Proposed vehicular emergency access routes to be maintained at all times.
- All protective fencing to be completed and approved by LPA / CA prior to commencement of site works.
- All works to conform with requirements of: BS 5838:2015 - Tree Works BS 5837:2012 - Trees in relation to design, demolition and construction



Rev	Description	By	CB	Date



Drawing Number:
7144

Project Name:
MONA OFFSHORE WIND PROJECT

Drawing Title:
TREE AND HEDGEROW PROTECTION PLAN

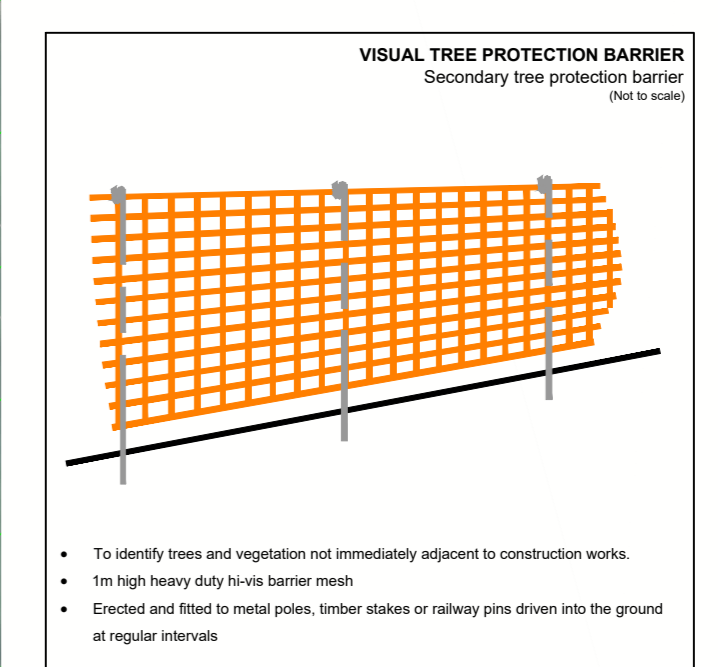
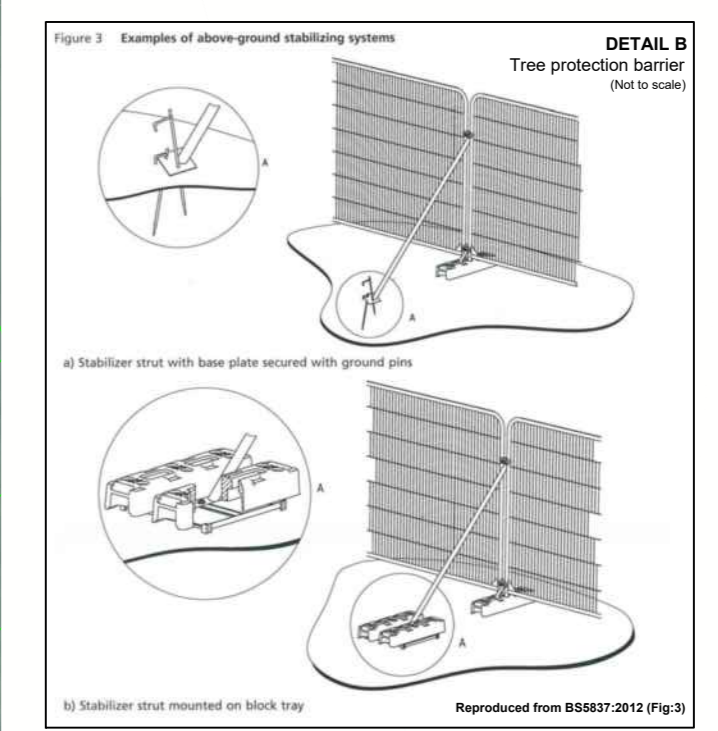
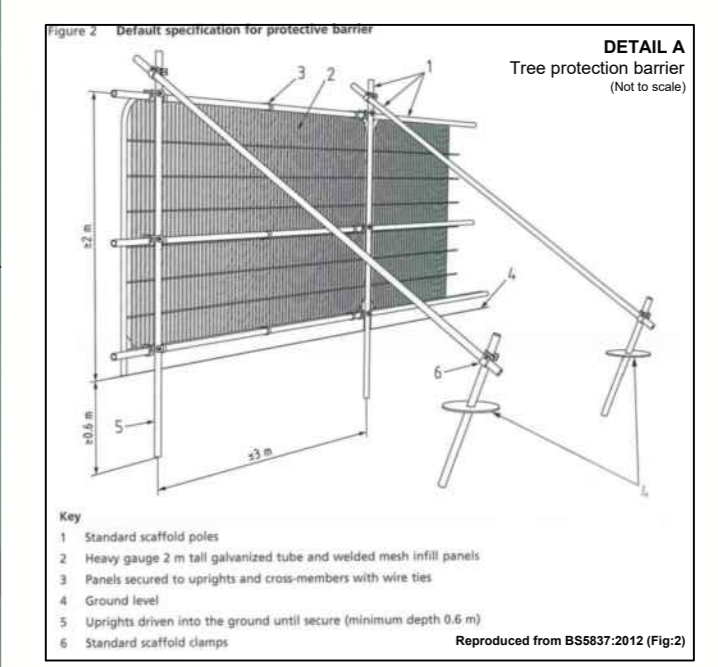
Scale
Scale@A0: 1:500

Geodetic Information:
Datum: ETRS 1989
Projection: British National Grid

Data Sources: Client

Service Layer Credits: Esri, HERE, Garmin, Intermap, increment P Corp., GEBCO, USGS, FAO, NPS, NRCAN, GeoBase, IGN, Kadaster NL, Ordnance Survey, Esri Japan, METI, Esri China (Hong Kong), (c) OpenStreetMap contributors, and the GIS User Community

VER	DATE	DETAILS	BY	CHECK
01	Jan/24	Comment	RC	DC
04	Sept/24	Information	RC	DC



- LEGEND**
- Creative Development Area (M0, P0, S0, S10, S20, S30, S40)
 - Tree with numbered reference. Canopy spread and coloured BS5837:2012 tree quality category as shown below.
 - = Tree details estimate (accessible tree)
 - = Tree in off location
 - Vegetation group with numbered reference. Canopy extents and coloured BS5837:2012 tree quality category as shown below.
 - Hedge with numbered reference. Canopy extents and coloured BS5837:2012 tree quality category as shown below.
 - Woodland with numbered reference. Canopy extents and coloured BS5837:2012 tree quality category as shown below.

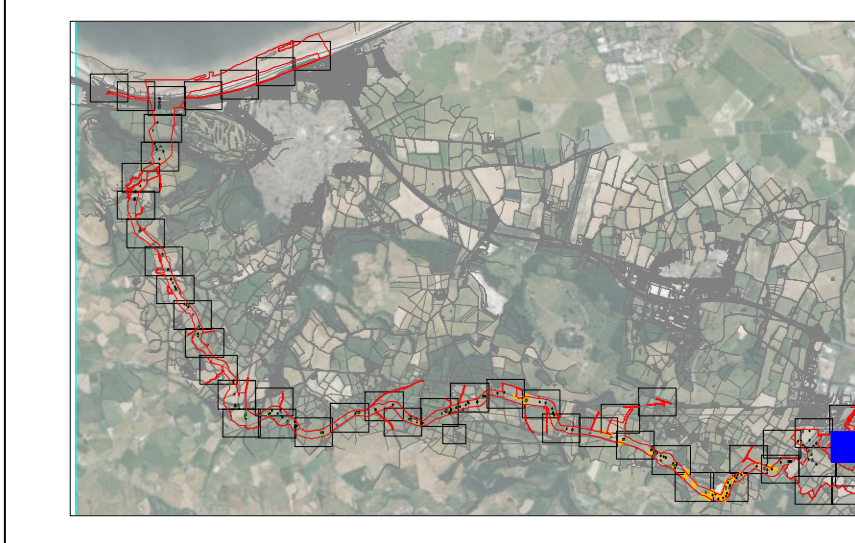
- BS 5837:2012 Tree Quality Categories - Table 1**
- Category A - High quality
 - Category B - Moderate quality
 - Category C - Low quality
 - Category U - Unsuitable for retention
- T1 Tree or vegetation to be removed with numbered reference. Canopy spread and BS5837:2012 tree quality category.
 - Root protection area (RPA) Calculated in accordance with Section 4.6 - BS5837:2012.
 - Precautionary Root protection area (RPA) previously added to un-surveyed trees. Shown for reference.
 - Tree protected by Conwy Council or Denbighshire Tree Preservation Order (TPO). Bracketed number reference relates to the TPO Schedule.
 - Veteran tree buffer (15 x stem Ø) (as per standing advice produced by Natural Resource Wales)
 - Designated Ancient Woodland and buffer (15m offset; as per Natural Resource Wales woodland inventory, via open data publication)

- Arboricultural BRAG Assessment**
Based on quantitative and professional assessment. The ranking is defined as:
- Black: Significant arboreal asset within development.
 - Red: High potential to constrain development;
 - Amber: Moderate potential to constrain development; and
 - Green: Low potential to constrain development

- Construction Compound or Access Area**
Arboricultural constraint based on providing a construction exclusion zone (CEZ):
- Black: At all times, compound should avoid entering this area;
 - Red: In nearly all circumstances, compound should avoid entering this area;
 - Amber: In most circumstances, compound should avoid entering this area;
 - Green: Little or no arboricultural constraint which would affect compound location.

- Cable Crossing Technique with numbered reference**
- Trenchless
 - Trenching / Trenchless
 - Trenched
- Indicative temporary protective fencing in accordance with Section 6.2 - BS5837:2012 See example, also shown within supporting report.
 - Indicative temporary visual warning barrier. See example detail, also shown within supporting report.

- NOTES:**
- Refer to RPS Tree Survey & Arboricultural Impact Assessment Report for further details.
 - Survey based on a visual inspection from the ground and is not intended as a full arboricultural inspection.
 - Plan produced in accordance with recommendations set out in BS 5837:2012 - Trees in relation to design, demolition and construction.
 - Due to the legal protection afforded to breeding birds vegetation removal should not take place during the nesting period; generally, although not restricted to, March - August inclusive.
 - Survey based upon aerial photography, therefore tree locations should be deemed as approximate, and not digitally accurate.
 - Proposed vehicular emergency access routes to be maintained at all times.
 - All protective fencing to be completed and approved by LPA/CA prior to commencement of site works.
 - All works to conform with requirements of: BS 5837:2012 - Tree Works BS 5837:2012 - Trees in relation to design, demolition and construction



Rev	Description	By	CB	Date



Drawing Number:
7145

Project Name:
MONA OFFSHORE WIND PROJECT

Drawing Title:
TREE AND HEDGEROW PROTECTION PLAN

Scale
Scale@A0: 1:500

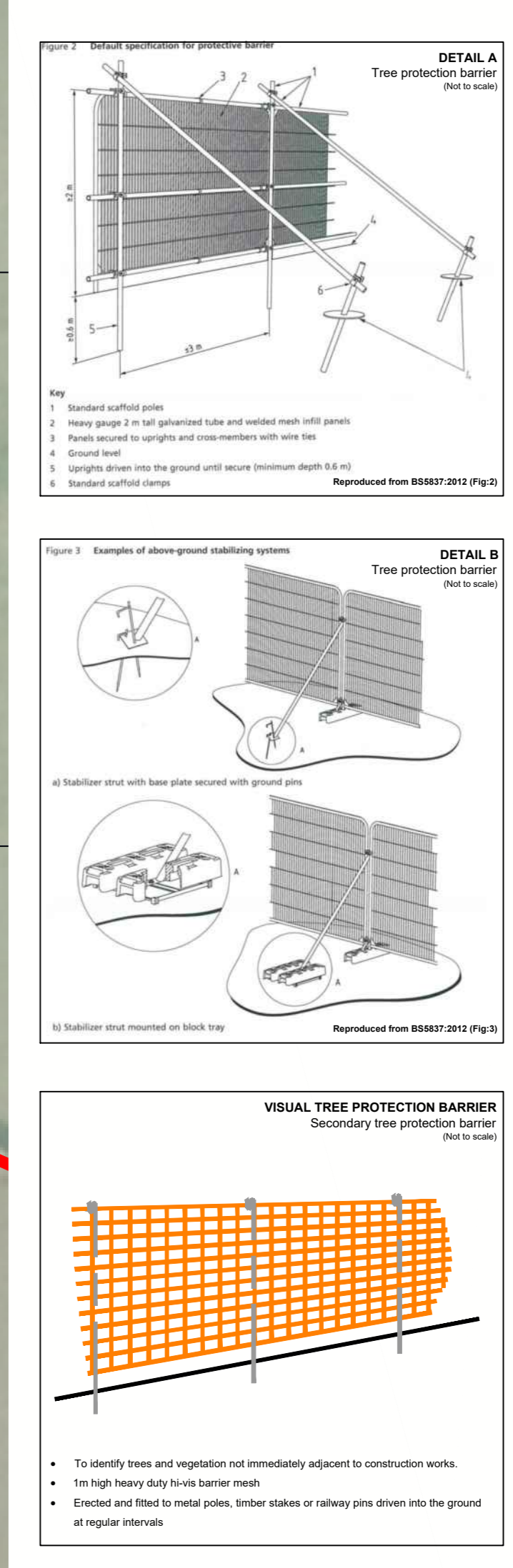
Geodetic Information:
Datum: ETRS 1989
Projection: British National Grid

Data Sources: Client

Service Layer Credits: Esri, HERE, Garmin, Intermap, increment P Corp., GEBCO, USGS, FAO, NPS, NRCAN, GeoBase, IGN, Kadaster NL, Ordnance Survey, Esri Japan, METI, Esri China (Hong Kong), (c) OpenStreetMap contributors, and the GIS User Community

VER	DATE	DETAILS	BY	CHECK
01	Jan/24	Comment	RC	DC
04	Sept/24	Information	RC	DC

\\sru-hq-01\projects\3900 Series\3900 - Morgan and Mona Offshore\Arboriculture\Tech\ACAD\Current\3900_800E_TPP_Cable Route.dwg
\\sru-hq-01\projects\3900 Series\3900 - Morgan and Mona Offshore\Arboriculture\Tech\ACAD\Current\3900_800E_TPP_Cable Route.dwg



LEGEND

- Creative Development Area (MSI_PRL_SP_0162_DCO_Ru01)
- Tree with numbered reference. Canopy spread and coloured BS5837:2012 tree quality category as shown below.
 - = Tree details estimate (accessible tree)
 - = Tree in off site location
- Vegetation group with numbered reference. Canopy extents and coloured BS5837:2012 tree quality category as shown below.
- Hedge with numbered reference. Canopy extents and coloured BS5837:2012 tree quality category as shown below.
- Woodland with numbered reference. Canopy extents and coloured BS5837:2012 tree quality category as shown below.

BS 5837:2012 Tree Quality Categories - Table 1

- Category A - High quality
- Category B - Moderate quality
- Category C - Low quality
- Category U - Unsuitable for retention

- Tree or vegetation to be removed with numbered reference. Canopy spread and BS5837:2012 tree quality category.
- Root protection area (RPA) Calculated in accordance with Section 4.6 - BS5837:2012
- Precautionary Root protection area (RPA) previously added to un-surveyed trees. Shown for reference.
- Tree protected by Conwy Council or Denbighshire Tree Preservation Order (TPO). Bracketted number reference relates to the TPO Schedule.
- Veteran tree buffer (15 x stem Ø) (as per standing advice produced by Natural Resource Wales)
- Designated Ancient Woodland and buffer (15m offset; as per Natural Resource Wales woodland inventory, via open data publication)

Arboricultural BRAG Assessment
Based on quantitative and professional assessment. The ranking is defined as:

- Black: Significant arboreal asset within development.
- Red: High potential to constrain development;
- Amber: Moderate potential to constrain development; and
- Green: Low potential to constrain development

Construction Compound or Access Area
Arboricultural constraint based on providing a construction exclusion zone (CEZ):

- Black: At all times, compound should avoid entering this area;
- Red: In nearly all circumstances, compound should avoid entering this area;
- Amber: In most circumstances, compound should avoid entering this area;
- Green: Little or no arboricultural constraint which would affect compound location.

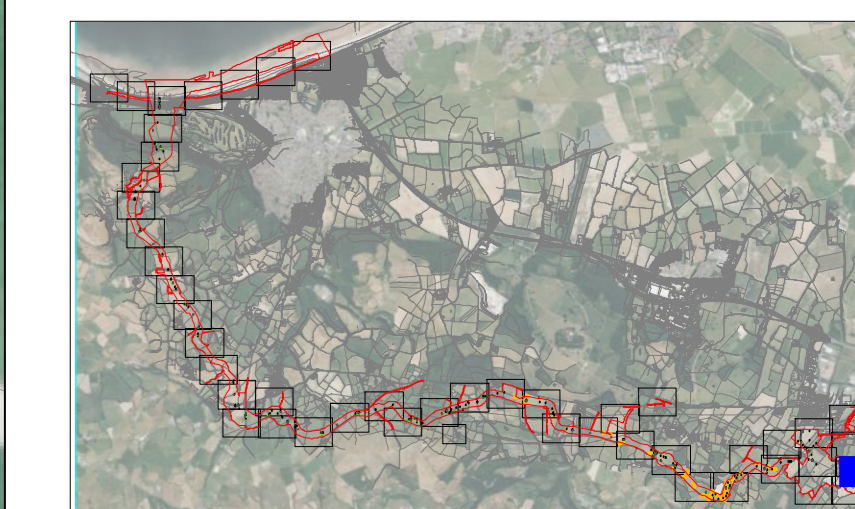
Cable Crossing Technique with numbered reference

- Trenchless
- Trenching / Trenchless
- Trenched

- Indicative temporary protective fencing in accordance with Section 6.2 - BS5837:2012 See example, also shown within supporting report.
- Indicative temporary visual warning barrier. See example detail, also shown within supporting report.

NOTES:

- Refer to RPS Tree Survey & Arboricultural Impact Assessment Report for further details.
- Survey based on a visual inspection from the ground and is not intended as a full arboricultural inspection.
- Plan produced in accordance with recommendations set out in BS 5837:2012 - Trees in Relation to Design, Demolition and Construction.
- Due to the legal protection afforded to breeding birds vegetation removal should not take place during the nesting period; generally, although not restricted to, March - August inclusive.
- Survey based upon aerial photography, therefore tree locations should be deemed as approximate, and not digitally accurate.
- Predefined vehicular emergency access routes to be maintained at all times.
- All protective fencing to be completed and approved by IPA / CA prior to commencement of site works.
- All works to conform with requirements of:
 - BS 5838:2015 - Tree Works
 - BS 5837:2012 - Trees in relation to design, demolition and construction



Rev	Description	By	CB	Date



Drawing Number:
7146

Project Name:
MONA OFFSHORE WIND PROJECT

Drawing Title:
TREE AND HEDGEROW PROTECTION PLAN

Scale:
Scale@A0: 1:500

Geodetic Information:
Datum: ETRS 1989
Projection: British National Grid

Data Sources: Client

Service Layer Credits: Esri, HERE, Garmin, Intermap, increment P Corp., GEBCO, USGS, FAO, NPS, NRCAN, GeoBase, IGN, Kadaster NL, Ordnance Survey, Esri Japan, METI, Esri China (Hong Kong), (c) OpenStreetMap contributors, and the GIS User Community

VER	DATE	DETAILS	BY	CHECK
01	Jan/24	Comment	RC	DC
04	Sept/24	Information	RC	DC



LEGEND

Orange Development Area
(MS_PRL_SF_0162_000_Rev11)

- T1 Tree with numbered reference. Canopy spread and coloured BS5837:2012 tree quality category as shown below.
 - # = Tree details estimate (inaccessible tree)
 - = Tree in off site location
- G1 Vegetation group with numbered reference. Canopy extents and coloured BS5837:2012 tree quality category as shown below.
- H1 Hedge with numbered reference. Canopy extents and coloured BS5837:2012 tree quality category as shown below.
- W1 Woodland with numbered reference. Canopy extents and coloured BS5837:2012 tree quality category as shown below.

BS 5837:2012 Tree Quality Categories - Table 1

- Category A - High quality
- Category B - Moderate quality
- Category C - Low quality
- Category U - Unsuitable for retention

- T1 Tree or vegetation to be removed with numbered reference. Canopy spread and BS5837:2012 tree quality category.
- Root protection area (RPA) Calculated in accordance with Section 4.6 - BS5837:2012
- Precautionary Root protection area (RPA) previously added to un-surveyed trees. Shown for reference.
- Tree protected by Conwy Council or Denbighshire Tree Preservation Order (TPO). Bracketed number reference relates to the TPO Schedule.
- Veteran tree buffer (15 x stem Ø) (as per standing advice produced by Natural Resource Wales)
- Designated Ancient Woodland and buffer (15m offset, as per Natural Resource Wales woodland inventory, via open data publication)

Arboricultural BRAG Assessment
Based on quantitative and professional assessment. The ranking is defined as:

- Black: Significant arboreal asset within development.
- Red: High potential to constrain development;
- Amber: Moderate potential to constrain development; and
- Green: Low potential to constrain development

Construction Compound or Access Area
Arboricultural constraint based on providing a construction exclusion zone (CEZ):

- Black: At all times, compound should avoid entering this area.
- Red: In heavy all circumstances, compound should avoid entering this area;
- Amber: In most circumstances, compound should avoid entering this area;
- Green: Little or no arboricultural constraint which would affect compound location.

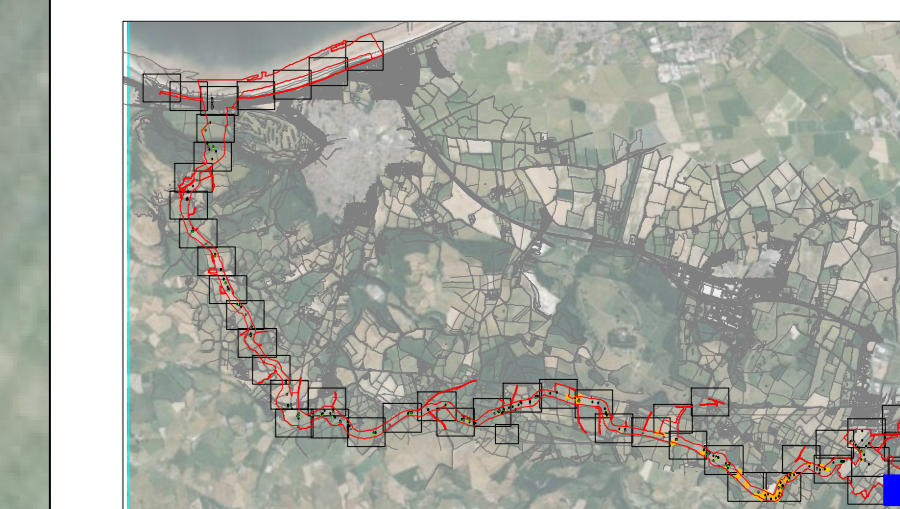
Cable Crossing Technique with numbered reference

- Trenchless
- Trenching / Trenchless
- Trenched

- Indicative temporary protective fencing in accordance with Section 6.2 - BS5837:2012 See example, also shown within supporting report.
- Indicative temporary visual warning barrier. See example detail, also shown within supporting report.

NOTES:

- Refer to RPS Tree Survey & Arboricultural Impact Assessment Report for further details.
- Survey based on a visual inspection from the ground and is not intended as a full arboricultural inspection.
- Plans produced in accordance with recommendations set out in BS 5837:2012 - Trees in Relation to Design, Demolition and Construction.
- Due to the legal protection afforded to breeding birds vegetation removal should not take place during the bird nesting period; generally, although not restricted to, March - August inclusive.
- Survey based upon aerial photography, therefore tree locations should be deemed as approximate, and not digitally accurate.
- Predefined vehicular emergency access routes to be maintained at all times.
- All protective fencing to be completed and approved by LPA / CA prior to commencement of site works.
- All works to conform with requirements of:
 - BS 5837:2012 - Tree Works
 - BS 5837:2012 - Trees in relation to design, demolition and construction



Rev	Description	By	CB	Date



Drawing Number:
7147

Project Name:
MONA OFFSHORE WIND PROJECT

Drawing Title:
TREE AND HEDGEROW PROTECTION PLAN

Scale
Scale@A0: 1:500

Geodetic Information:
Datum: ETRS 1989
Projection: British National Grid

Data Sources: Client

Service Layer Credits: Esri, HERE, Garmin, Intermap, increment P Corp., GEBCO, USGS, FAO, NPS, NRCAN, GeoBase, IGN, Kadaster NL, Ordnance Survey, Esri Japan, METI, Esri China (Hong Kong), (c) OpenStreetMap contributors, and the GIS User Community

VER	DATE	DETAILS	BY	CHECK
01	Jan/24	Comment	RC	DC
04	Sept/24	Information	RC	DC

\\snu-hfd-01\projects\3909 Series\US_3909 - Morgan and Mona Offshore\Arboriculture\Tech\ACAD\Current\US_3909_010E_TFP_Cable Route.dwg
\\snu-hfd-01\projects\3909 Series\US_3909 - Morgan and Mona Offshore\Arboriculture\Tech\ACAD\Current\US_3909_010E_TFP_Cable Route.dwg